



SPORT COURT ALBERTA

www.sportcourtalberta.com 403-287-0466

Sport Fitness Flooring Tiles

Heavyweight

Dimensions / Specs

Thickness : 5/16" (7.5mm)
Dimensions : 35 7/16" x 35 7/16" (90 x 90cm)
Weight: 16.09 lb (7.3 kg)
Hardness : 75⁰ Shore A [DIN 53505]



Features / Benefits

- Increased Density
- Mark-Resistant
- Only Free-Weight, Wood-Look Product
- Integrates with Multi-Fit Product

Designed For

- Free Weights (Dumbbells, Barbells)
- Heavy Weight Equipment

Colors

Standard Colors



Mahogany



Black Marble



Special Order



MultiFit

Dimensions / Specs

Thickness : 5/16" (7.5mm)
Dimensions : 35 7/16" x 35 7/16" (90 x 90cm)
Weight: 6.39lb (2.9kg)
Hardness : 75⁰ Shore A [DIN 53505]



Features / Benefits

- Resists Marks
- Reduces Noise and Vibration
- Integrates with Heavyweight Product

Designed For

- Cardio Areas
- Circuit Training Equipment
- Spinning Rooms
- Home Workout Rooms

Colors

Standard Colors



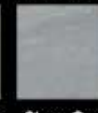
Bamboo



Beechwood



White Marble



Stone Gray



Special Order





SPORT COURT ALBERTA

www.sportcourtalberta.com 403-287-0466

Sport Fitness Flooring Tiles

Comfort

Dimensions / Specs

Thickness : 15/32" (11.5 mm)
Dimensions : 47 1/4" x 47 1/4" (120 x 120cm)
Weight: 7.05lb (3.2kg)
Hardness : 40A Shore A [DIN 53505]



52% Shock Absorbency / Force Reduction

Features / Benefits

- Softest, Most Comfortable
- Reduces Noise & Vibration
- Not Affected by Humidity

Designed For

- Yoga
- Stretching
- Pilates
- Kids' Play Areas

Colors

Standard Colors



Bamboo

White Marble



Special Order*



White Marble



Beechwood

ComfortMat

Dimensions / Specs

Thickness : 13/32" (15mm)
Dimensions : 4'8" x 2' (140 x 60cm)
Weight: 2.86lb (1.3kg)
Hardness : 40A Shore A [DIN 53505]



Features / Benefits

- Softest, Most Wear-Resistant Mat Available
- Maximum Protection, Comfort

Colors

Standard Colors



Mahogany

Black Marble



Mahogany



SPORT COURT ALBERTA

www.sportcourtalberta.com 403-287-0466

Sport Fitness Flooring Tiles

Soft-Fit

Dimensions / Specs

Thickness : 3/8" (9mm)
Dimensions : 39 3/8" x 39 3/8" (100 x 100cm)
Weight: 5.95lb (2.7kg)
Hardness : 65D Shore A [DIN 53505]



45 % Shock Absorbency / Force Reduction

Features / Benefits

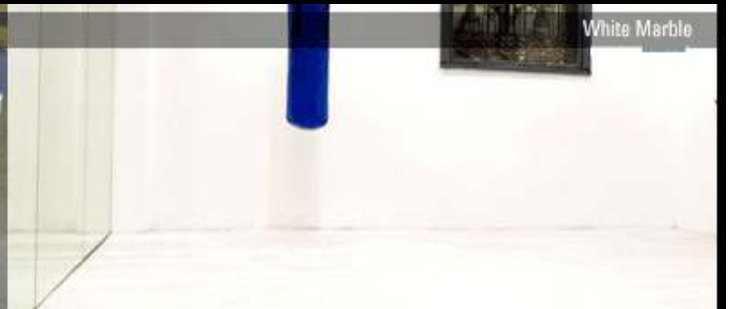
- Best in-class Performance
- Low Point Shock
- Excellent Energy Return

Designed For

- Aerobic Studios
- Step Classes
- Cardio
- Cardio-Combat

Colors

Standard Colors



FloorGuard

Dimensions / Specs

	2pc	Extension
Thickness :	3/16" (5mm)	3/16" (5mm)
Dimensions :	36 1/5" x 48 5/16"	36" x 36"
	(92 x 122cm)	(92 x 92cm)
Weight:	5.95lb (2.7kg)	5.4lbs (2.45kg)
Hardness :	75D Shore A	75D Shore A
	[DIN 53505]	



Features / Benefits

- Protects Flooring Beneath Machines
- Modular and Adaptable
- Elegant Patterns and "Wood Looks"

Colors

Standard Colors

